



M.A.M. SCHOOL OF ENGINEERING

(ACCREDITED BY NAAC)

(Approved by AICTE, New Delhi and Affiliated to Anna University, Chennai)

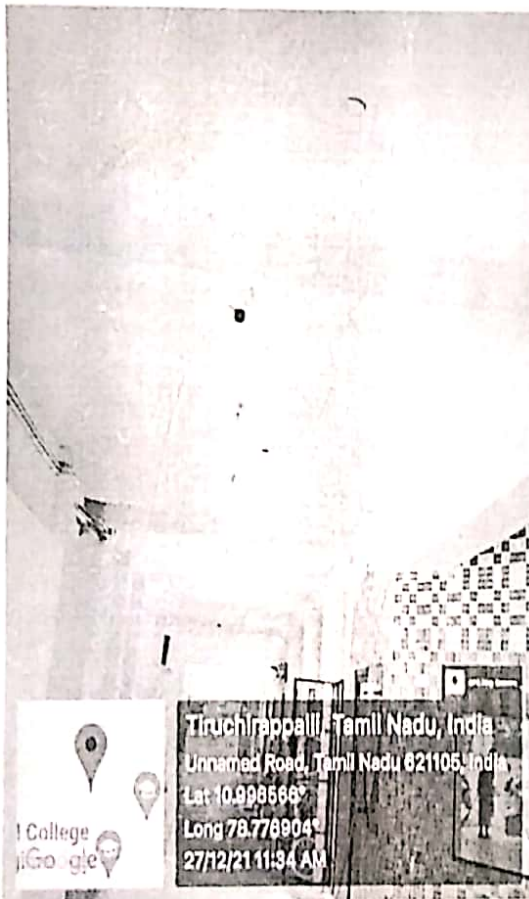
SIRUGANUR, TRICHY - 621 105

www.mamse.in

7.1.1 Measures initiated by the Institution for the promotion of gender equity during the last five years.

- Specific facilities provided for women in terms of:
 - a) Safety and security
 - b) Counselling
 - c) Common Rooms
 - d) Day care center for young children

CCTV CAMERAS




PRINCIPAL

PRINCIPAL

M.A.M. SCHOOL OF ENGINEERING
SIRIGANUR, TIRUCHIRAPPALLI-621 105.



M.A.M. SCHOOL OF ENGINEERING

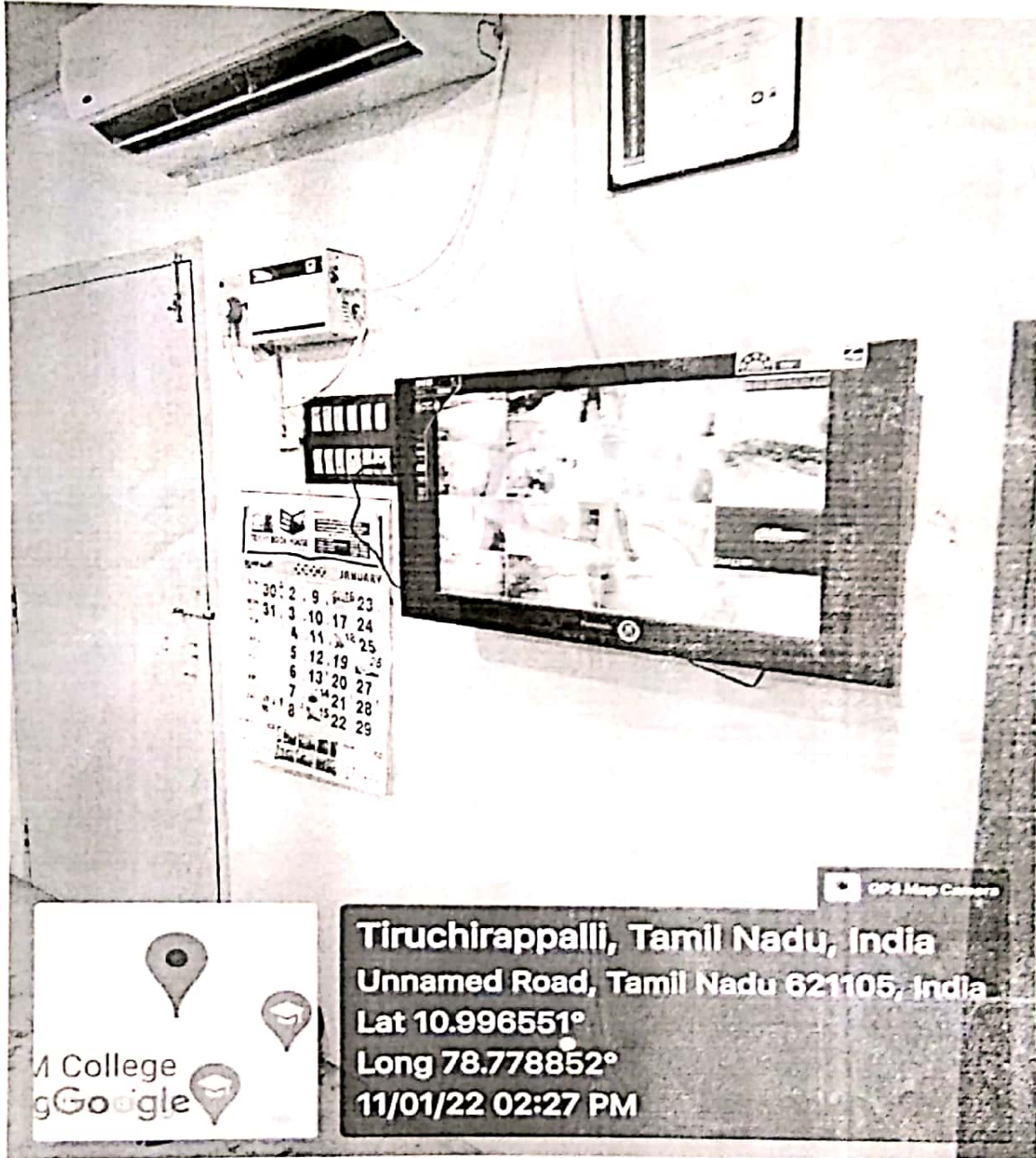
(ACCREDITED BY NAAC)

(Approved by AICTE, New Delhi and Affiliated to Anna University, Chennai)

SIRUGANUR, TRICHY - 621 105

www.mamse.in

CCTV



Tiruchirappalli, Tamil Nadu, India
 Unnamed Road, Tamil Nadu 621105, India
 Lat 10.996551°
 Long 78.778852°
 11/01/22 02:27 PM

PRINCIPAL
PRINCIPAL
 M.A.M. SCHOOL OF ENGINEERING
 SIRUGANUR, TIRUCHIRAPPALLI-621 105



M.A.M. SCHOOL OF ENGINEERING

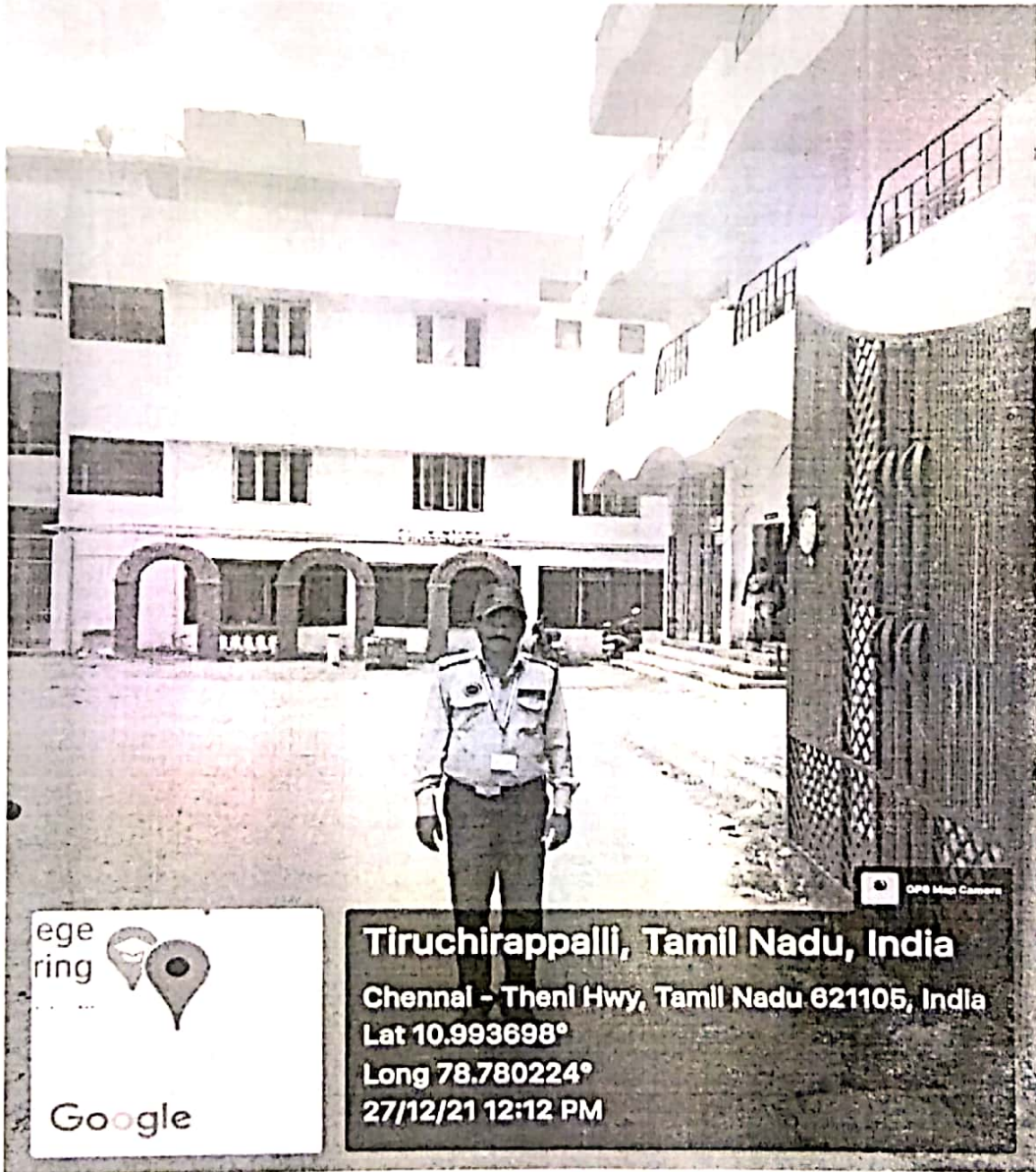
(ACCREDITED BY NAAC)

(Approved by AICTE, New Delhi and Affiliated to Anna University, Chennai)

SIRUGANUR, TRICHY - 621 105

www.manise.in

WOMEN'S HOSTEL



PRINCIPAL

PRINCIPAL

**M.A.M. SCHOOL OF ENGINEERING
SIRIGANUR, TIRUCHIRAPPALLI-621 105.**



M.A.M. SCHOOL OF ENGINEERING

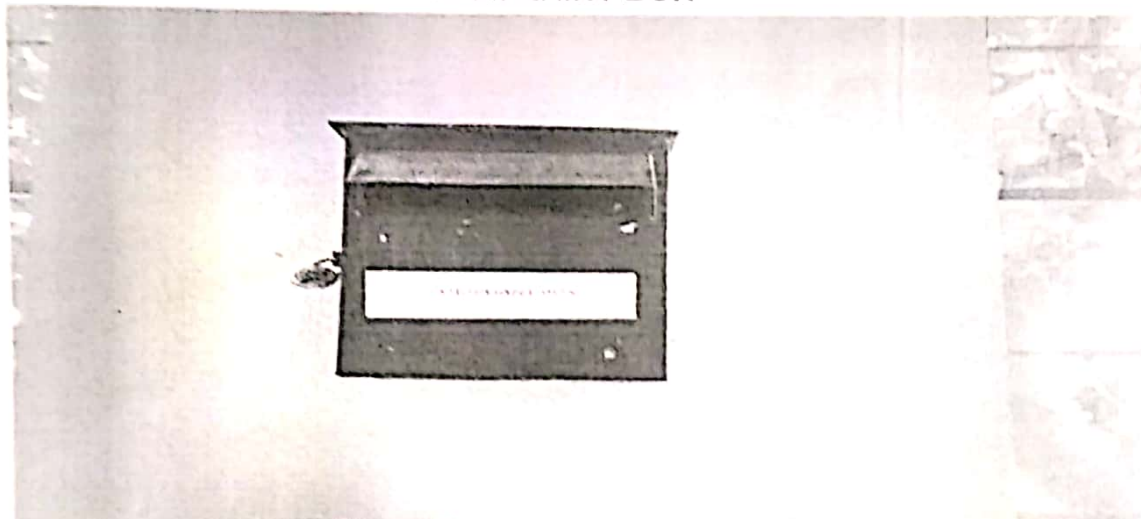
(ACCREDITED BY NAAC)

(Approved by AICTE, New Delhi and Affiliated to Anna University, Chennai)

SIRUGANUR, TRICHY - 621 105

www.mamse.in

COMPLAINT BOX



Tiruchirappalli, Tamil Nadu, India
Unnamed Road, Tamil Nadu 621105, India
Lat 10.996585°
Long 78.778906°
27/12/21 12:57 PM



Tiruchirappalli, Tamil Nadu, India
Unnamed Road, Tamil Nadu 621105, India
Lat 10.996581°
Long 78.778871°
30/12/21 05:22 PM

PRINCIPAL

PRINCIPAL

**M.A.M. SCHOOL OF ENGINEERING
SIRIGANUR, TIRUCHIRAPPALLI-621 105.**



M.A.M. SCHOOL OF ENGINEERING

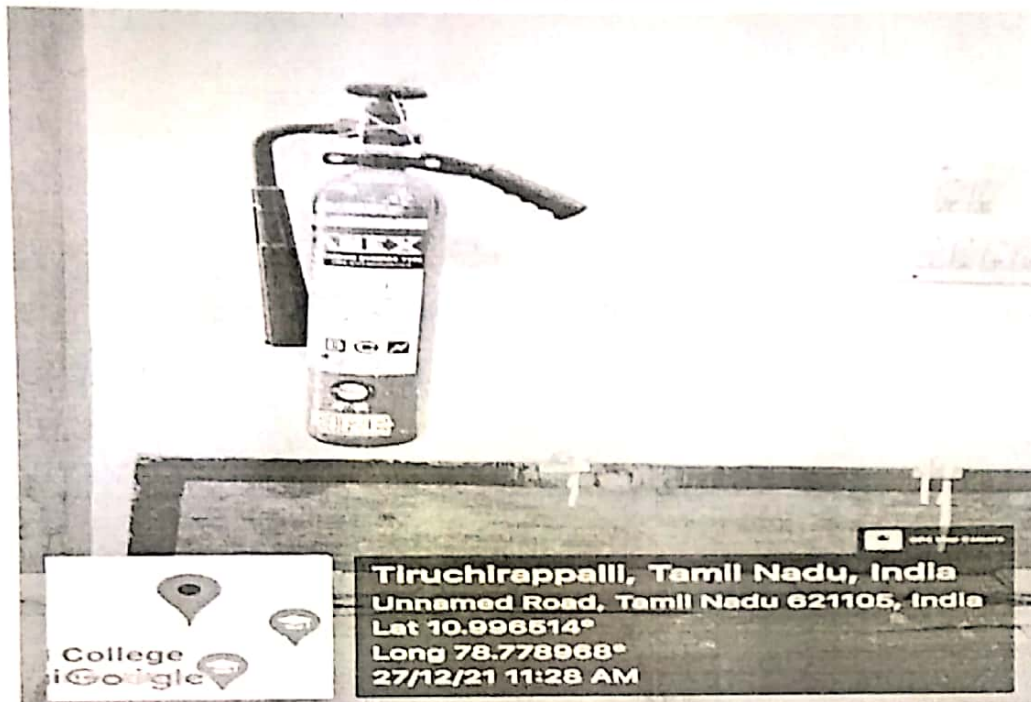
(ACCREDITED BY NAAC)

(Approved by AICTE, New Delhi and Affiliated to Anna University, Chennai)

SIRUGANUR, TRICHY - 621 105

www.mamse.in

FIRE EXTINGUISHERS



PRINCIPAL

PRINCIPAL
M.A.M. SCHOOL OF ENGINEERING
SIRUGANUR, TIRUCHIRAPPALLI-621 105.



M.A.M. SCHOOL OF ENGINEERING

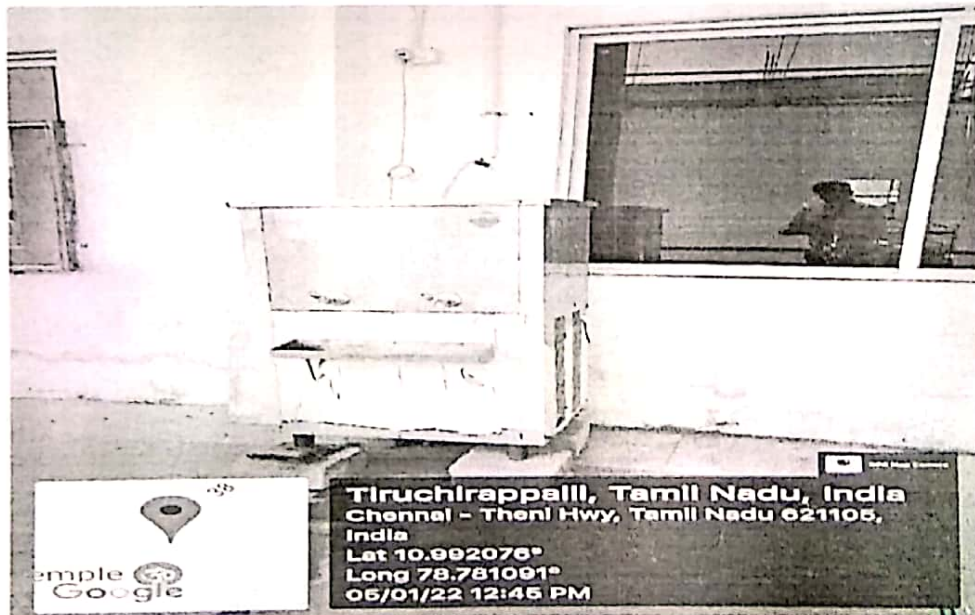
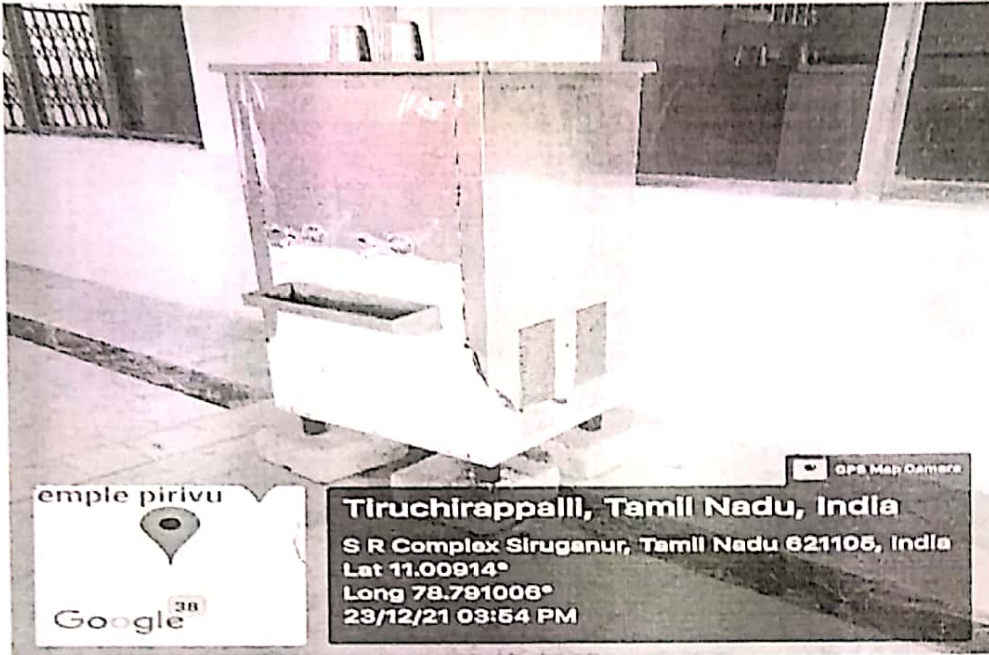
(ACCREDITED BY NAAC)

(Approved by AICTE, New Delhi and Affiliated to Anna University, Chennai)

SIRUGANUR, TRICHY - 621 105

www.mamse.in

SAFE DRINKING WATER FACILITY



PRINCIPAL
PRINCIPAL
M.A.M. SCHOOL OF ENGINEERING
SIRIGANUR, TIRUCHIRAPPALLI-621 105,



M.A.M. SCHOOL OF ENGINEERING

(ACCREDITED BY NAAC)

(Approved by AICTE, New Delhi and Affiliated to Anna University, Chennai)

SIRUGANUR, TRICHY - 621 105

www.mamse.in

ANTI RAGGING COMMITTEE

S. NO.	NAME	DESIGNATION	CONTACT NO.
1			
2			
3			
4			
5			
6			
7			
8			
9			
10			
11			
12			
13			
14			
15			
16			
17			
18			
19			
20			
21			
22			
23			
24			
25			
26			
27			
28			
29			
30			
31			
32			
33			
34			
35			
36			
37			
38			
39			
40			
41			
42			
43			
44			
45			
46			
47			
48			
49			
50			
51			
52			
53			
54			
55			
56			
57			
58			
59			
60			
61			
62			
63			
64			
65			
66			
67			
68			
69			
70			
71			
72			
73			
74			
75			
76			
77			
78			
79			
80			
81			
82			
83			
84			
85			
86			
87			
88			
89			
90			
91			
92			
93			
94			
95			
96			
97			
98			
99			
100			

Tiruchirappalli, Tamil Nadu, India
 Unnamed Road, Tamil Nadu 621105, India
 Lat 10.996559°
 Long 78.778923°
 27/12/21 11:33 AM

PRINCIPAL
PRINCIPAL
M.A.M. SCHOOL OF ENGINEERING
SIRUGANUR, TIRUCHIRAPPALLI-621 105.



M.A.M. SCHOOL OF ENGINEERING

(ACCREDITED BY NAAC)

(Approved by AICTE, New Delhi and Affiliated to Anna University, Chennai)

SIRUGANUR, TRICHY - 621 105

www.mamse.in

ANTI RAGGING COMMITTEE



M.A.M. SCHOOL OF ENGINEERING

Accredited by NAAC

Approved by AICTE, New Delhi, Affiliated to Anna University, Chennai
Siruganur, Trichy - 621 105.

www.mamse.in

Anti-ragging committee

Ref: MAMSE/Anti-Ragg /2020-2021/01

12.08.2020

CIRCULAR

The Anti-ragging committee & Anti-ragging Squad have been formed for this academic year 2020-2021 to curb the menace of ragging in our institution.

Anti-ragging Committee (2020-2021)

S. No.	Name	Position	Designation	Contact Number	E-mail id
1	Dr. P. Ranjith Kumar	Chairman	Principal	7708000971	principal@mamse.in
2	Mr. Raja	Member	Police Inspector	7904122700	mamschoolengg@yahoo.co.in
3	Mr. S.Malar	Member	Thasildhar	9445000602	mamschoolengg@yahoo.co.in
4	Mr. R. Bhaskaran	Member	Career Counsellor	9659973206	bhaskaranme@gmail.com
5	Mr. K. Randeep Raj Kumar	Member	Psychologist	9843795750	randeep_psychologist@hotmail.com
6	Dr. R.Kumar	Member	Psychiatrist	9443326662	mamsepsycho@mamse.in
7	Dr.S.M.Azar	Member	Medical Officer	9840940003	ajkarpeer@gmail.com
8	Mr.T.A. Punithan	Member	Legal Advisor	9944480115	advocatepunithan@gmail.com
9	Mr. Saravanan	Member	Journalist	9994383096	mamsejourn@mamse.in
10	Dr.P.Lilly Florence	Member	Teaching Faculty	9751028553	lilly_jeneliya@yahoo.com
11	Mr.R.Ramanathan	Member	Teaching Faculty	9865597384	smathan2000@gmail.com
12	Mr.M.Prabakaran	Member	Representative of parents	9843510231	logeshprabakaran@gmail.com
13	Ms.Sruthi.S	Member	Representative of students	9150365571	suruthuselva01@gmail.com
14	Mr.T.Kulothungan	Member	Office Superintendent	6379889422	mamschoolengg@yahoo.co.in
15	Mr.B.Jennithkumar	Member	Representative of students	9047132832	jenithbala07@gmail.com



PRINCIPAL
M.A.M. SCHOOL OF ENGINEERING
SIRUGANUR, TIRUCHIRAPPALLI

PRINCIPAL
PRINCIPAL
M.A.M. SCHOOL OF ENGINEERING
SIRUGANUR, TIRUCHIRAPPALLI-621 105.



M.A.M. SCHOOL OF ENGINEERING

(ACCREDITED BY NAAC)

(Approved by AICTE, New Delhi and Affiliated to Anna University, Chennai)

SIRUGANUR, TRICHY - 621 105

www.mamse.in

ANTI RAGGING COMMITTEE

ANTI-RAGGING (ANNEXURE D) AFFIDAVIT BY THE STUDENT

1) I, k. Naveen kumar s/o (or) d/o
Mr./Mrs./Ms. G. Kalliravan having been admitted
to M.A.M. School of Engineering, Siruganur, Trichy-621 105, have received a copy of the
AICTE Regulation dated 1.7.2009 on Curbing the Menace of Ragging in Higher Educational
Institutions, (here in after called the "Regulation") carefully read and fully understood the provisions
contained in the said Regulations.

2) I have, in particular, perused Clause 4 of the Regulation and am aware as to what constitutes
ragging.

3) I have also, in particular, perused Clause 5(3) and Clause 5(4)(a) of the Regulation and am fully
aware of the penal and administrative action that is liable to be taken against me in case I am
found guilty of or abetting ragging, actively or passively, or being part of a conspiracy to promote
ragging.

4) I hereby solemnly aver and undertake that

a) I will not indulge in any behavior or act that may be constituted as ragging under Clause 4
of the Regulations.

b) I will not participate in or abet or propagate through any act of commission or omission
that may be constituted as ragging under Clause 4 of the Regulations.

5) I hereby solemnly affirm that, if found guilty of ragging, I am liable for punishment according to
clause 8(4)(a) of the Regulations, without prejudice to any other criminal action that may be
taken against me under any penal law or any law for the time being in force.

6) I hereby declare that I have not been expelled or debarred from admission in any institution in the
country on account of being found guilty of, abetting or being part of a conspiracy to promote,
ragging; and further affirm that, in case the declaration is found to be untrue, I am aware that
my admission is liable to be cancelled.

Declared this 3rd day of September month of 2018 year.

k. Naveenkumar
Signature of Student.
Name k. Naveen kumar

VERIFICATION

Verified that the contents of this affidavit are true to the best of my knowledge and no part of the affidavit
is false and nothing has been concealed or misstated therein.

Verified at MAM School of Engg (place) on this the 3rd (day) of September (month) (year) 2018

Signature of deponent
Solemnly affirmed and signed in my presence on this the 3rd (day) of September (month) (year) 2018
after reading the contents of this affidavit.

OATH COMMISSION

PRINCIPAL

PRINCIPAL

M.A.M. SCHOOL OF ENGINEERING
SIRUGANUR, TIRUCHIRAPPALLI-621 105.



M.A.M. SCHOOL OF ENGINEERING

(ACCREDITED BY NAAC)

(Approved by AICTE, New Delhi and Affiliated to Anna University, Chennai)

SIRUGANUR, TRICHY - 621 105

www.mamse.in

POSH CELL



PRINCIPAL

PRINCIPAL

M.A.M. SCHOOL OF ENGINEERING
SIRIGANUR, TIRUCHIRAPPALLI-621 105.



M.A.M. SCHOOL OF ENGINEERING

(ACCREDITED BY NAAC)

(Approved by AICTE, New Delhi and Affiliated to Anna University, Chennai)

SIRUGANUR, TRICHY - 621 105

www.mamse.in

POSH CELL



M.A.M. School of Engineering

Accredited by NAAC
ISO Certified Institution

Approved by AICTE, New Delhi/Affiliated to Anna University, Chennai
Siruganur, Tiruchirappalli-621 105.
2017-2018



MINUTES OF MEETING - I

Cell: POSH (Prevention of Sexual Harassment) Cell

Date: 17.7.2017

Scheduled Time of start: 2.00 p.m	Actual Time of start: 2.00 p.m	Venue: Seminar Hall
Planned Duration of the Meeting: 30 minutes.	Actual Duration of the Meeting: 30 minutes.	Attendance (%): 100
Chaired by : Dr.P.Lilly Florence/ HOD/Chemistry		Compiled by: Dr.P.Lilly Florence, HOD/Chemistry

Members Present	Signature	Members Absent (Signature)
Dr. P. Lilly Florence, HoD/Chemistry		NIL
Mrs. P. Kavitha, HoD/Mechatronics	<i>[Signature]</i>	
Ms. S. Murugavalli, HoD/CSE	<i>[Signature]</i>	
Ms. P. Sudha, AP/ECE	<i>[Signature]</i>	
Ms. G. JeyaShankari, IV Year Mechatronics	<i>[Signature]</i>	
Ms. J. Oszin Thomsy, IV year CSE	<i>[Signature]</i>	
Ms. M. G. Indumathi, III year ECE	<i>[Signature]</i>	
Ms. K. Dhivya, II Year CSE	<i>[Signature]</i>	
Ms. S. Sansha, II year Mechatronics	<i>[Signature]</i>	
Ms. R. Amreen Sulthana Begum, II year EEE	<i>[Signature]</i>	
Ms. T. Indra, I year Aero	<i>[Signature]</i>	
Ms. M. Madhu Mitha, I year ECE	<i>[Signature]</i>	

S.No.	Points Discussed	Details of discussion	Action Taken	Action by	Target Date
1	Discussed about the safety of girls students	Dress code	To insist the lady faculty to monitor the girls dressing and way of dupatta wearing	All HOD's	Within 3 days
2	Discussed about the awareness of the students on bad touch	Discussed about the awareness programme on Safety	To create awareness on bad touch and good touch	All Women Faculty	
3	Use of college buses	Made discussions on usage of college buses- especially girls students for safety purposes	To insist girls students to use college buses	Principal	

[Signature]
Chairperson
17/7/17

DEPARTMENT OF SCIENCE & HUMANITIES
M.A.M. SCHOOL OF ENGINEERING
SIRUGANUR, TRICHY- 621 105.



[Signature]
Principal
M.A.M. SCHOOL OF ENGINEERING
SIRUGANUR, TRICHIRAPPALLI-621 105.

PRINCIPAL

PRINCIPAL

M.A.M. SCHOOL OF ENGINEERING
SIRUGANUR, TIRUCHIRAPPALLI-621 105.



M.A.M. SCHOOL OF ENGINEERING

(ACCREDITED BY NAAC)

(Approved by AICTE, New Delhi and Affiliated to Anna University, Chennai)

SIRUGANUR, TRICHY - 621 105

www.mamse.in

POSH CELL

M. A. M SCHOOL OF ENGINEERING TIRUCHIRAPPALLI - 621 105
2019-2020

MINUTES OF MEETING - 2

Cell: POSH (Prevention of Sexual Harassment) Cell		Date: 19.12.2019
Scheduled Time of start: 3.00 p.m	Actual Time of start: 3.00 p.m	Venue: Seminar Hall
Planned Duration of the Meeting: 30 minutes.	Actual Duration of the Meeting: 30 minutes.	Attendance (%): 83
Chaired by: Dr.P.Lilly Florence/ HoD/Chemistry		Compiled by: Dr.P.Lilly Florence, HoD/Chemistry
Members Present	Signature	Members Absent (Signature)
Dr. P. Lilly Florence, HoD/ Chemistry		
Dr.S.Rahmi		Absent
Ms.Usha Rani		Absent
Mrs.P.Kavitha		
Mrs.Dharani Devi		
Ms.S.Murugavalli		
Ms.Sethamil Selvi		
Ms. M. Madhumitha,	Mathu mtha	
Ms. Durga Devi	Durga devi	
Ms.Shalini priya	Shalini Priya	
Ms. Menaka	A Menaka	
Ms.S.Preethika	S Preethika	

S.No.	Points Discussed	Details of discussion	Action Taken	Action by	Target Date
1	Interaction with students and faculty	Interaction with 2 or 3 students and faculty	Committee members interacted with two students and faculty	POSH cell	
2	Continue of interaction process with other 2 faculty and students	Interaction with 2 or 3 students and faculty - periodically	Committee members have to interact with any two/ three students and faculty	Committee Chair person / members	Before January
3	Till now no cases of sexual harassment have been registered.				

Chairperson
DEPARTMENT OF SCIENCE & HUMANITIES
M.A.M. SCHOOL OF ENGINEERING
SIRUGANUR, TRICHY-621 105.



Principal
M.A.M. SCHOOL OF ENGINEERING
SIRUGANUR, TIRUCHIRAPPALLI-621 105

PRINCIPAL

PRINCIPAL
M.A.M. SCHOOL OF ENGINEERING
SIRUGANUR, TIRUCHIRAPPALLI-621 105.



M.A.M. SCHOOL OF ENGINEERING

(ACCREDITED BY NAAC)

(Approved by AICTE, New Delhi and Affiliated to Anna University, Chennai)

SIRUGANUR, TRICHY - 621 105

www.mamse.in

STUDENTS COUNSELLING



PRINCIPAL

PRINCIPAL
M.A.M. SCHOOL OF ENGINEERING
SIRIGANUR, TIRUCHIRAPPALLI-621 105,



M.A.M. SCHOOL OF ENGINEERING

(ACCREDITED BY NAAC)

(Approved by AICTE, New Delhi and Affiliated to Anna University, Chennai)

SIRUGANUR, TRICHY - 621 105

www.mamse.in

STUDENT'S COUNSELLING



M.A.M. SCHOOL OF ENGINEERING

Siruganur, Tiruchirappalli - 621105.

DEPARTMENT OF *Electronics and Communication Engineering*

REVISED BOOKLET

Batch 2015 - 2019



Name : *P. Ramelathini*

University Register No : *SR1515106016*

Address for Communication : *97, Pillalayar Kovilgost, Crawford*

Father's / Guardian's Name : *P. Suresh*

Father's Occupation : *Real Estate Business*

Address : *87, Pillalayar Kovilgost, Crawford*
Trichy.

Pin Code

Telephone No : *9788*

Cell No : *9788065069*

Email ID : *ramelathini.gueran98@gmail.com*

PRINCIPAL

PRINCIPAL

M.A.M. SCHOOL OF ENGINEERING
SIRIGANUR, TIRUCHIRAPPALLI-621 105.



M.A.M. SCHOOL OF ENGINEERING

(ACCREDITED BY NAAC)

(Approved by AICTE, New Delhi and Affiliated to Anna University, Chennai)

SIRUGANUR, TRICHY - 621 105

www.mamse.in

STUDENT'S COUNSELLING

DEPARTMENT OF ECE

DETAILS OF FACULTY ADVISORS

Batch 20 20

University Register No's 621008016
(From) (To)

S.No	Effective Date	Nominated Faculty Advisor	Remarks
1	12-08-2019	Mr. J. Kishan	...
2	12-08-2019	Mr. J. Kishan	...
3	12-08-2019	Mr. J. Kishan	...
4	15-06-19	Mr. J. Kishan	...
5	15-06-19	Mr. J. Kishan	...
6	15-06-19	Mr. J. Kishan	...
7	15-06-19	Mr. J. Kishan	...
8	15/2/19	P. Sudha	...

1. If for the Faculty Advisor nomination form issued by AICTE, the name of the nominated Faculty & Appointee Registration Number is the student.

2. Faculty Advisor is responsible for the safe custody and protection of the submitted student records.

3. Every Faculty Advisor is the owner of having the nomination form submitted within 30 days (up to the date of issue up to 30/06/2019).

4. If AICTE form is submitted to the Faculty Advisor to take over.

PRINCIPAL

PRINCIPAL
M.A.M. SCHOOL OF ENGINEERING
SIRUGANUR, TIRUCHIRAPPALLI-621 105.



M.A.M. SCHOOL OF ENGINEERING

(ACCREDITED BY NAAC)

(Approved by AICTE, New Delhi and Affiliated to Anna University, Chennai)

SIRUGANUR, TRICHY - 621 105

www.mamse.in

STUDENT'S COUNSELLING

Name of the Student: D. S. Srinivasan

Enroll Number: 121212121212

Roll No: 121212121212

Year of study: 1st Year

Branch of study: Computer Science

Group: Engineering

Sex: Male Female

Exam Mode: College Private Self Support

Particulars of Attendance & Date of report to Parents

Year	Semester	No. of Working Days	Days Absent	Date of report to Parents
1	1 st	120	10	12/12/12
	2 nd	120	15	12/12/12
2	1 st	120	12	12/12/12
	2 nd	120	18	12/12/12
3	1 st	120	10	12/12/12
	2 nd	120	15	12/12/12
4	1 st	120	12	12/12/12
	2 nd	120	18	12/12/12

* Parent's signature: _____

Principal's signature: _____

PRINCIPAL
PRINCIPAL
M.A.M. SCHOOL OF ENGINEERING
SIRIGANUR, TIRUCHIRAPPALLI-621 105.



M.A.M. SCHOOL OF ENGINEERING

(ACCREDITED BY NAAC)

(Approved by AICTE, New Delhi and Affiliated to Anna University, Chennai)

SIRUGANUR, TRICHY - 621 105

www.mamse.in

STUDENT'S COUNSELLING

ACADEMIC PERFORMANCE RECORD

I Semester

Subject Code	Subject	ATK	AT	ATK	AT	ATK	AT
1001	Engineering Mathematics I	85	75	85	75	85	75
1002	Engineering Mathematics II	85	75	85	75	85	75
1003	Engineering Mathematics III	85	75	85	75	85	75
1004	Engineering Mathematics IV	85	75	85	75	85	75
1005	Engineering Mathematics V	85	75	85	75	85	75
1006	Engineering Mathematics VI	85	75	85	75	85	75
1007	Engineering Mathematics VII	85	75	85	75	85	75
1008	Engineering Mathematics VIII	85	75	85	75	85	75
1009	Engineering Mathematics IX	85	75	85	75	85	75
1010	Engineering Mathematics X	85	75	85	75	85	75

II Semester

Subject Code	Subject	ATK	AT	ATK	AT	ATK	AT
1011	Engineering Mathematics XI	85	75	85	75	85	75
1012	Engineering Mathematics XII	85	75	85	75	85	75
1013	Engineering Mathematics XIII	85	75	85	75	85	75
1014	Engineering Mathematics XIV	85	75	85	75	85	75
1015	Engineering Mathematics XV	85	75	85	75	85	75
1016	Engineering Mathematics XVI	85	75	85	75	85	75
1017	Engineering Mathematics XVII	85	75	85	75	85	75
1018	Engineering Mathematics XVIII	85	75	85	75	85	75
1019	Engineering Mathematics XIX	85	75	85	75	85	75
1020	Engineering Mathematics XX	85	75	85	75	85	75

III Semester

Subject Code	Subject	ATK	AT	ATK	AT	ATK	AT
1021	Engineering Mathematics XXI	85	75	85	75	85	75
1022	Engineering Mathematics XXII	85	75	85	75	85	75
1023	Engineering Mathematics XXIII	85	75	85	75	85	75
1024	Engineering Mathematics XXIV	85	75	85	75	85	75
1025	Engineering Mathematics XXV	85	75	85	75	85	75
1026	Engineering Mathematics XXVI	85	75	85	75	85	75
1027	Engineering Mathematics XXVII	85	75	85	75	85	75
1028	Engineering Mathematics XXVIII	85	75	85	75	85	75
1029	Engineering Mathematics XXIX	85	75	85	75	85	75
1030	Engineering Mathematics XXX	85	75	85	75	85	75


PRINCIPAL
PRINCIPAL
M.A.M. SCHOOL OF ENGINEERING
SIRIGANUR, TIRUCHIRAPPALLI-621 105



M.A.M. SCHOOL OF ENGINEERING

(ACCREDITED BY NAAC)

(Approved by AICTE, New Delhi and Affiliated to Anna University, Chennai)

SIRUGANUR, TRICHY - 621 105

www.mamse.in

STUDENT'S COUNSELLING

V Semester						
Sl. No.	Name	Roll No.	Grade	Remarks	Signature	Date
1	M. A.	A			
2	E.	B			
3	G.	A			
4	S.	B			
5	L.	A			
6	V.	B			

VI Semester						
Sl. No.	Name	Roll No.	Grade	Remarks	Signature	Date
1	S.	A			
2	R.	B			
3	M.	A			
4	K.	B			
5	J.	A			
6	P.	B			

VII Semester						
Sl. No.	Name	Roll No.	Grade	Remarks	Signature	Date
1	S.	A			
2	R.	B			
3	M.	A			
4	K.	B			
5	J.	A			
6	P.	B			

* Signature of the parent/relative
 * Signature of the student

PRINCIPAL

PRINCIPAL

M.A.M. SCHOOL OF ENGINEERING
 SIRUGANUR, TIRUCHIRAPPALLI-621 105.



M.A.M. SCHOOL OF ENGINEERING

(ACCREDITED BY NAAC)

(Approved by AICTE, New Delhi and Affiliated to Anna University, Chennai)

SIRUGANUR, TRICHY - 621 105

www.mamse.in

STUDENT'S COUNSELLING

VII Semester

Subject Code	Subject	Exams	Practical	Mark	Grade	Remarks
1001	1. PPTC	15	12			
1002	2. PD	15	12			
1003	3. PD	15	12			
1004	4. PD	15	12			
1005	5. PD	15	12			
1006	6. PD	15	12			
1007	7. PD	15	12			
1008	8. PD	15	12			

VIII Semester

Subject Code	Subject	Exams	Practical	Mark	Grade	Remarks
1009	1. PD	15	12			
1010	2. PD	15	12			
1011	3. PD	15	12			
1012	4. PD	15	12			

* Total marks of the semester
 * Indicates marks of the previous semester

PRINCIPAL

PRINCIPAL

M.A.M. SCHOOL OF ENGINEERING
 SIRIGANUR, TIRUCHIRAPPALLI-621 105.



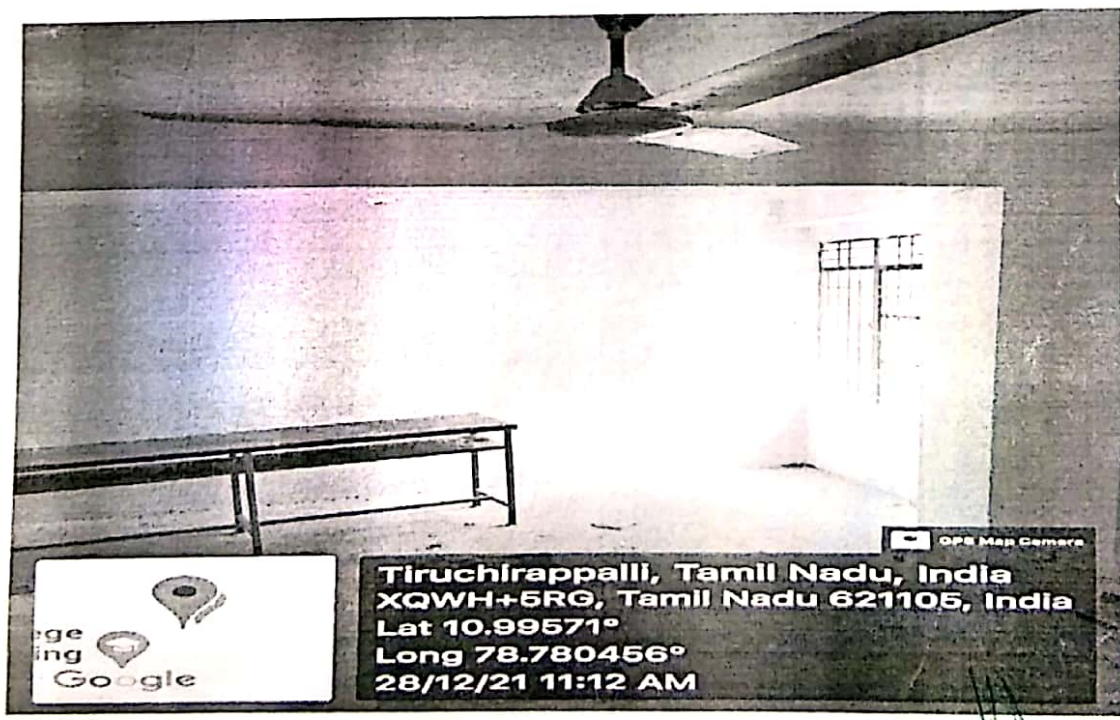
M.A.M. SCHOOL OF ENGINEERING

(ACCREDITED BY NAAC)
(Approved by AICTE, New Delhi and Affiliated to Anna University, Chennai)

SIRUGANUR, TRICHY - 621 105

www.mamse.in

COMMON ROOM



PRINCIPAL
PRINCIPAL
M.A.M. SCHOOL OF ENGINEERING
SIRIGANUR, TIRUCHIRAPPALLI-621 105.